

Relationship between Childhood Unpredictability and Emotional Schema Adaptation in Young Adults

Sapna Patel, Anna Vannucci, Ariel Katz, Nate Martin, Medina Shah, & Nim Tottenham



Introduction and Methods

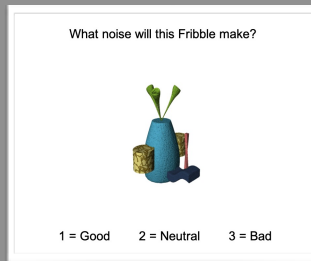
- Childhood adversity is linked to alterations on emotional learning processes and cognitive flexibility.
- Recent push to shift viewing impacts of childhood adversity as adaptive rather than detrimental.
 - Initial evidence to suggest unpredictable caregiving environments are linked to improved cognitive flexibility.
- Currently, no studies have looked at emotional schema learning processes.

Objective: To examine the relationship between childhood unpredictability and young adults' ability to adapt previously learned emotional schemas.

Hypothesis: Higher levels of childhood unpredictability will be linked to a greater ability to adapt previously learned emotional schemas.

Study Design:

- QUIC:** assesses levels of social, emotional, and physical predictability in the childhood environment
- Fribbles** (example shown to the right): objects, each with an associated valence based upon body color

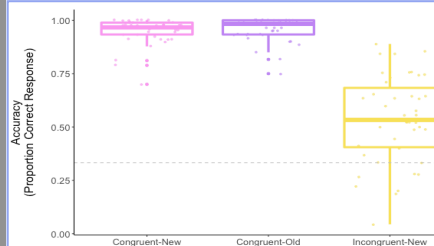


Participants:

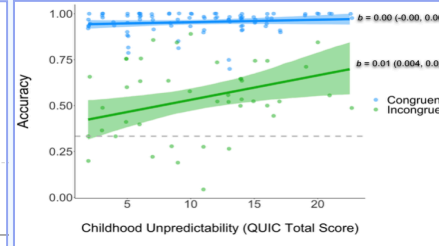
- Recruited 66 individuals online using Prolific
 - 47 individuals included for analysis
- Age: 18-25, mean = 23.6 yrs
- Gender: 45% female, 49% male, 6% other
- Race/Ethnicity: 15% Asian, 9% Black, 17% Hispanic/Latinx, 57% White

Results

Accuracy x Trial Type



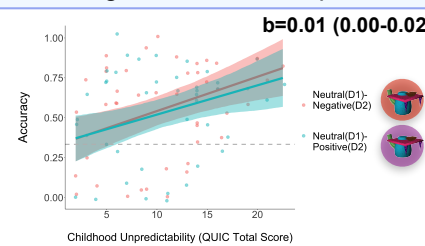
Accuracy by Trial Type x QUIC



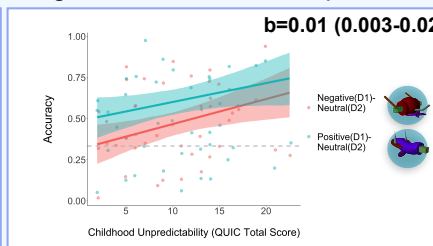
Incongruent Accuracies



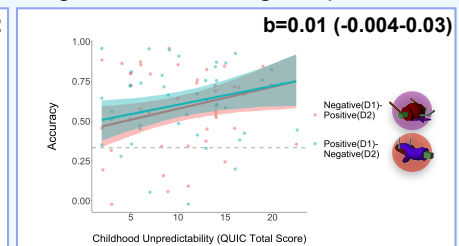
Neu-Neg vs Neu-Pos Adaptation



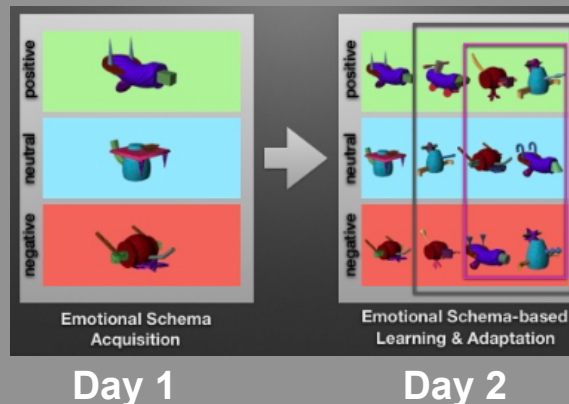
Neg-Neu vs Pos-Neu Adaptation



Neg-Pos vs Pos-Neg Adaptation



Task Design



Discussion

- Higher levels of childhood unpredictability are associated with an increased ability to accommodate new, incongruent information into previously learned emotional schemas, especially for changes from:
 - Negative to neutral schemas
 - Neutral to positive and negative schemas
- No association between childhood unpredictability and accuracy when shifting away from positive schemas
- Results support neural adaptation frameworks of childhood unpredictability